



City of Calimesa  
City Council Meeting  
July 19, 2023

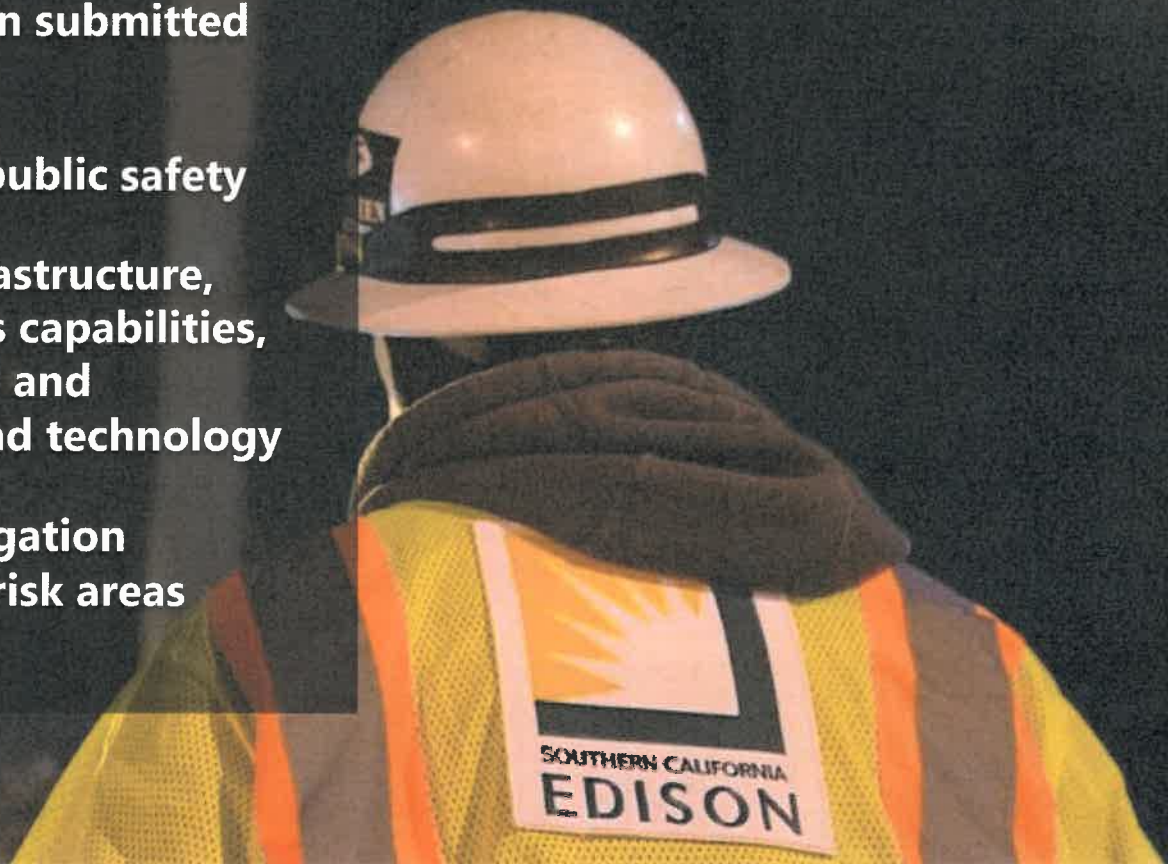
# OUR COMMITMENT TO CALIFORNIA

## KEEPING OUR COMMUNITIES SAFE FROM WILDFIRES

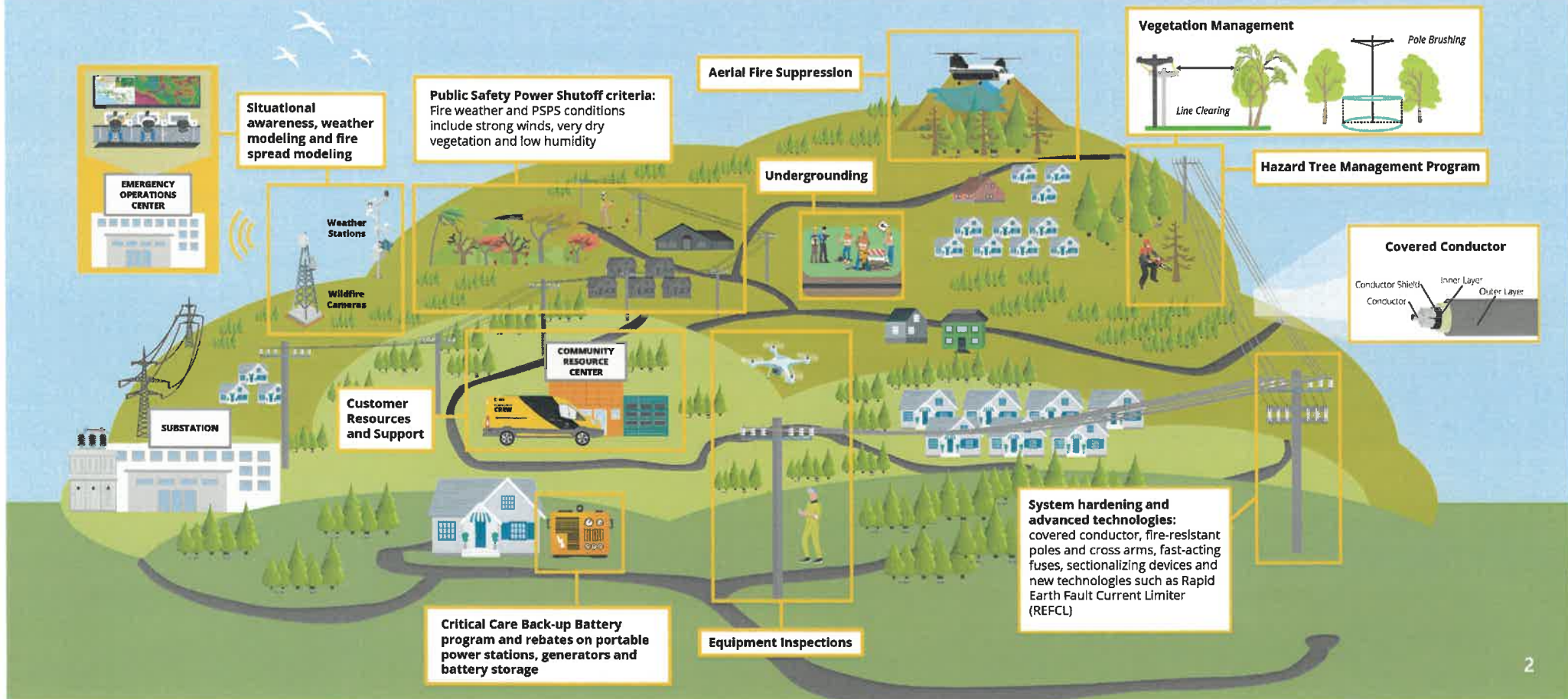


# OUR WILDFIRE MITIGATION PLAN

- **2023-25 Wildfire Mitigation Plan submitted on March 27**
- **Primary objective is to protect public safety**
- **SCE is further hardening its infrastructure, bolstering situational awareness capabilities, enhancing operational practices and harnessing the power of data and technology**
- **SCE incorporates advanced mitigation measures deployed in high fire risk areas around the world**



# REDUCING WILDFIRE RISK IN OUR COMMUNITIES



# PSPS CUSTOMER PROGRAMS & RESOURCES



## CUSTOMER RESOURCE CENTERS & COMMUNITY CREW VEHICLES

- Services offered: information, mobile and portable medical device charging, PSPS outage alert enrollment support, access to water, snacks, ice and ice vouchers, restrooms, and insulated cold bags for medications
- Translations services for over 120 languages including American Sign Language (ASL)



## CUSTOMER PROGRAMS

- Partner with 211 to help customers with Access and Functional Needs (AFN) develop a resiliency plan and enroll in eligible assistance programs
- Specialized referrals for customers with AFN experiencing PSPS through partnerships with foodbanks and 211. Services may include shelf-stable food, hot meal delivery, transportation and/or temporary lodging
- Ongoing effort to broaden communications access, including using ASL for marketing videos and PSPS notifications



## CUSTOMER RESILIENCY EQUIPMENT

- Critical Care Backup Battery program provides eligible customers with a portable backup battery to power a medical device during a PSPS event
- Rebates on portable batteries and generators for customers residing in high fire risk areas on [marketplace.sce.com](https://marketplace.sce.com)

# PSPS COMMUNICATIONS

## Notifications

- SCE provides PSPS notifications through various communication channels
  - SCE Account Holders (email, text, and voice call)
  - Address Level Alerts
- You can manage your outage notifications and ensure your information is current in the customer preference center.

## SCE Outage Map

- Consolidated outage map that incorporates PSPS outages at [sce.com/outagemap](https://sce.com/outagemap)

**Power Outages**

Search by address, city, county or ZIP

[Click here to enter the outage number and check the status.](#)

**Current Outages**  
28 Outages | 1,065 Customers Impacted

**Upcoming Scheduled Outages**  
1,531 Outages Scheduled | 68,293 Customers Possibly Impacted

**Public Safety Power Shutoff (PSPS)**  
Search for an address to see specific PSPS details or see county-level details [here](#).

Not Seeing Your Outage?  
Last Updated: 5/2/2022 - 6:02 PM PST [Report](#)

**Outage Alerts**  
Stay informed about unplanned repair and planned maintenance outages. [Get Alerts >](#)

**Community Support**

[Resource Centers](#) [Crew Vehicles](#) [Further Assistance](#)

SCE Community Resource Centers are available to support customers during a Public Safety Power Shutoffs... [More >](#)

Website: [sce.com/wildfire](https://sce.com/wildfire)  
Energized by Edison Stories & Videos: [edison.com/wildfire-safety](https://edison.com/wildfire-safety)

SCE Customer Support: [1-800-655-4555](tel:1-800-655-4555)

## STAY INFORMED



- Visit our website
- Attend a community meeting

## SIGN UP & UPDATE CONTACT



- Outage alerts
- SCE's Medical Baseline program
- SCE programs and rebates

## BE PREPARED



- Be prepared with a safety preparedness plan, some basic supplies and advance planning
- Power outage tips

# HELPFUL INFORMATION & RESOURCES

## SCE Wildfire Webpage – [sce.com/wildfire](https://www.sce.com/wildfire)

### SCE Notifications

- Sign up for PSPS alerts – [sce.com/pspsalerts](https://www.sce.com/pspsalerts)
- Sign up for the Energized by Edison Wildfire Mitigation Newsletter – [energized.edison.com/newsletter](https://energized.edison.com/newsletter)

### Situational Awareness

- SCE outage map – [sce.com/outagemap](https://www.sce.com/outagemap)
- PSPS information – [sce.com/psps](https://www.sce.com/psps)
- PSPS decision making – [sce.com/pspsdecisionmaking](https://www.sce.com/pspsdecisionmaking)
- Role of weather in PPS – [sce.com/fireweather](https://www.sce.com/fireweather)
- Weather awareness for PPS – [sce.com/wildfire/weather-awareness](https://www.sce.com/wildfire/weather-awareness)
- Situational awareness map – [sce.com/wildfire/situational-awareness](https://www.sce.com/wildfire/situational-awareness)
- Wildfire cameras – [alertca.live](https://alertca.live)
- Weather stations – [sce.com/weatherstations](https://www.sce.com/weatherstations)
- CPUC wildfire maps – [ia.cpuc.ca.gov/firemap/](https://ia.cpuc.ca.gov/firemap/)

### Preparedness

- SCE emergency preparedness – [sce.com/beprepared](https://www.sce.com/beprepared)
- CAL FIRE preparedness – [readyforwildfire.org](https://readyforwildfire.org)

### Vegetation Management

- Vegetation Management – [sce.com/safety/power-lines](https://www.sce.com/safety/power-lines); contact 1-800-655-4555 or [safetrees@sce.com](mailto:safetrees@sce.com)

### Customer Programs & Rebates

- SCE Customer Programs & Resources – [sce.com/customerresources](https://www.sce.com/customerresources)
- SCE Marketplace (rebates and programs) – [marketplace.sce.com](https://marketplace.sce.com)
- SCE Critical Care Backup Battery Program – [sce.com/ccbb](https://www.sce.com/ccbb)
- SCE Access & Functional Needs Resources – [sce.com/afn](https://www.sce.com/afn)
- SCE Medical Baseline Program – [sce.com/medicalbaseline](https://www.sce.com/medicalbaseline)
- Self Generation Incentive Program (SGIP) – [sce.com/sgip](https://www.sce.com/sgip) or [selfgenca.com](https://selfgenca.com)
- SCE Customer Support: 1-800-655-4555

### Community Meetings

- Join SCE's wildfire safety community meetings – [sce.com/wildfiresafetymeetings](https://www.sce.com/wildfiresafetymeetings)

### Energized by Edison

- Stories and videos on SCE's wildfire mitigation efforts and PPS – [edison.com/wildfire-safety](https://www.edison.com/wildfire-safety)